

WEST END MIDDLE SCHOOL

3529 West End Avenue | Nashville, TN 37205 | 615-298-8425



441
STUDENTS

White 50.85%
African American 38.90%
Hispanic 6.07%
Asian 3.98%



65
FACULTY & STAFF



7
COMMUNITY PARTNERS

SERVES GRADES 5-8 IN THE HILLSBORO CLUSTER

- ☑ **Open Enrollment**
- ☑ **Offers Bus Transportation**
- ☑ **Offers Before or After Care**

ADMINISTRATION

Executive Principal:

Trey Stephens - James.Stephensiii@mnps.org

Assistant Principal:

Erma Laymon - Erma.Laymon@mnps.org

Counselor:

April Roberts - April.Roberts@mnps.org

 schools.mnps.org/west-end-middle-prep

 [@westendmiddle](https://twitter.com/westendmiddle)

 facebook.com/westendptso

 [@westendmiddleprep](https://www.instagram.com/westendmiddleprep)

SCHOOL HIGHLIGHTS

- ★ Multimedia Arts program engages students in video and sound editing, complete with a recording studio.
- ★ Our band has been recognized with a Band of Distinction Award.
- ★ We offer an extended list of clubs and extracurricular activities both before and after school.
- ★ Our teachers provide weekly rewards and incentives to support positive behavior.

DRESS CODE

Tops: Should cover torso from the neck and shoulders to waist. No holes in inappropriate areas or clothing that promotes violence, drugs, or alcohol.

Bottoms: No holes in inappropriate areas.

ACADEMIC PROGRAMS

IB

FEATURED EXTRACURRICULAR ACTIVITIES

Athletics, National Junior Honor Society, Yearbook, Big Bluey News Network, Student Council, Robotics

FEATURED COMMUNITY PARTNERS

The Gospel Church, Otter Creek, Vine Street Christian Church, Trove Heights, Vanderbilt University, United4Hope, New Hope Missionary Baptist Church, Blakemore United Methodist Church, West End Alumni Association

RESOURCES & SUPPORTS

Clothing Closet, tutoring, Restorative Justice Mentoring, PBIS, reading partners

PARENT ORGANIZATION

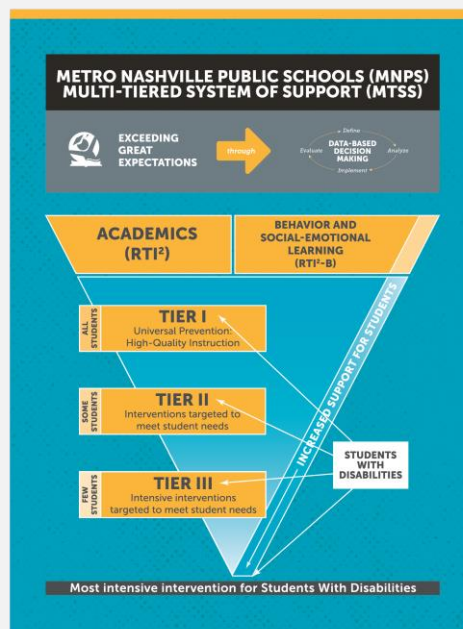
Monthly on Tuesdays
President: Will Sanford
email: westendptso@gmail.com
westendptso.org

MULTI-TIERED SYSTEM OF SUPPORT (MTSS)

Metro Schools knows our students each have a unique set of needs and the teaching and learning in our classrooms must reflect that. Through our Multi-Tiered System of Support (MTSS) framework, educators and administrators have proven tools at their disposal to support a timely and effective response to academic and behavioral needs for each student — meeting the child where they are.

HOW MTSS WORKS

Our school has a dedicated MTSS team, representative of teachers and leaders throughout the building. This team meets to discuss students who may need additional supports and reviews each student’s supporting data. Our MTSS data team meets every five weeks to identify students who may need additional supports and interventions. This team monitors students’ progress and adjusts plans as needed.



MTSS IN ACTION AT WEST END MIDDLE SCHOOL

Universal Supports for All Students	Targeted Supports and Interventions	Intensive Supports and Interventions
<ul style="list-style-type: none"> • Clear expectations for daily attendance • School-wide positive behavior expectations • Equitable access to rigorous grade-level, standards-based instruction that is culturally responsive and integrates social/emotional development • Inclusive partnerships with families and communities • Consistent school-wide discipline procedures • Physical activity and nutrition services 	<ul style="list-style-type: none"> • Language! Live • I-Ready 	<ul style="list-style-type: none"> • SEL – Social-Emotional Learning & Support • Restorative Approach to Learning • Behavior Intervention Plan • Small group behavioral skills instruction • A.M.E.N.D. • Girls, Inc.